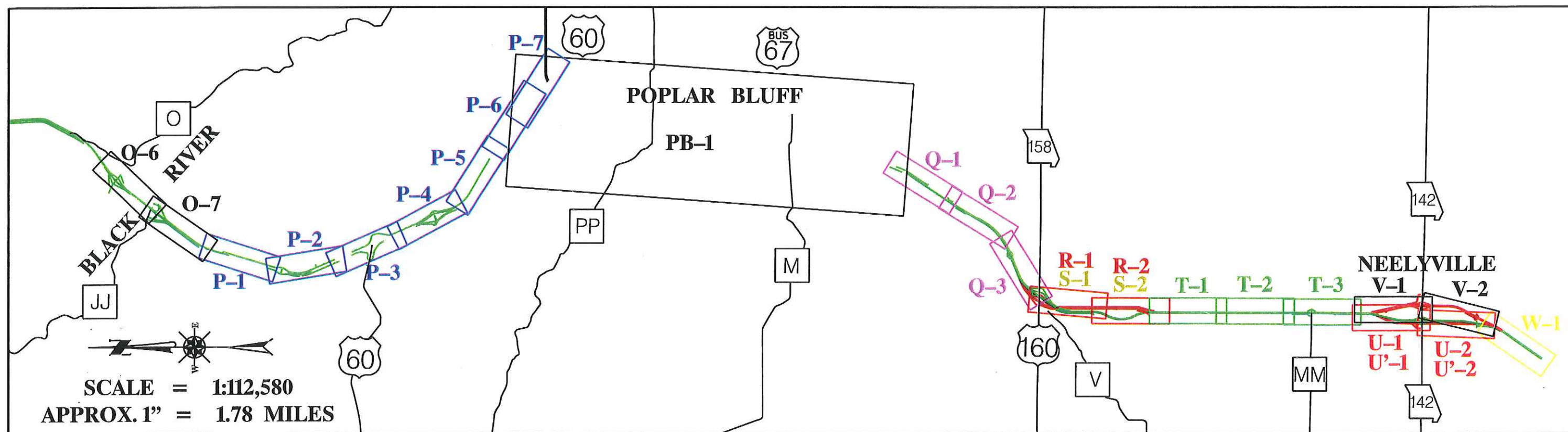


# **ROUTE 67 LOCATION STUDY** **MADISON, WAYNE & BUTLER COUNTIES** **MoDOT JOB NO. J0P0746**

**PRELIMINARY PLAN /PROFILE**





# **ROUTE 67 LOCATION STUDY** **INDEX OF SHEETS** **BUTLER COUNTY**

# PRELIMINARY PLAN / PROFILE LEGEND



U. S. HIGHWAY



STATE NUMBERED HIGHWAY



STATE LETTERED HIGHWAY



COUNTY ROAD



PROPOSED PAVEMENT



PROPOSED RIGHT OF WAY

D 12+500

STATIONING OF PROPOSED ROAD  
(SEGMENT & STATION)



PERENNIAL STREAM



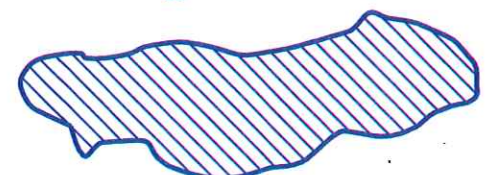
INTERMITTENT STREAM



SPRING



NWI WETLAND



FEN



100-YEAR FLOOD ELEV.  
(WAPPAPELLO LAKE)



CITY LIMIT



PROPERTY LINE



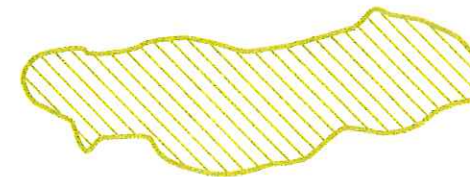
SECTION LINE



SECTION CORNER



CEMETERY



SENSITIVE OR UNIQUE  
NATURAL AREA

## WETLAND ABBREVIATIONS

*PUB*

PALUSTRINE UNCONSOLIDATED  
BOTTOM

*PAB*

PALUSTRINE AQUATIC BED

*PSS*

PALUSTRINE SCRUB SHRUB

*PEM*

PALUSTRINE EMERGENT

*PFO*

PALUSTRINE FORESTED

*RIV*

RIVERINE

*MCWL*

MADISON COUNTY WETLAND

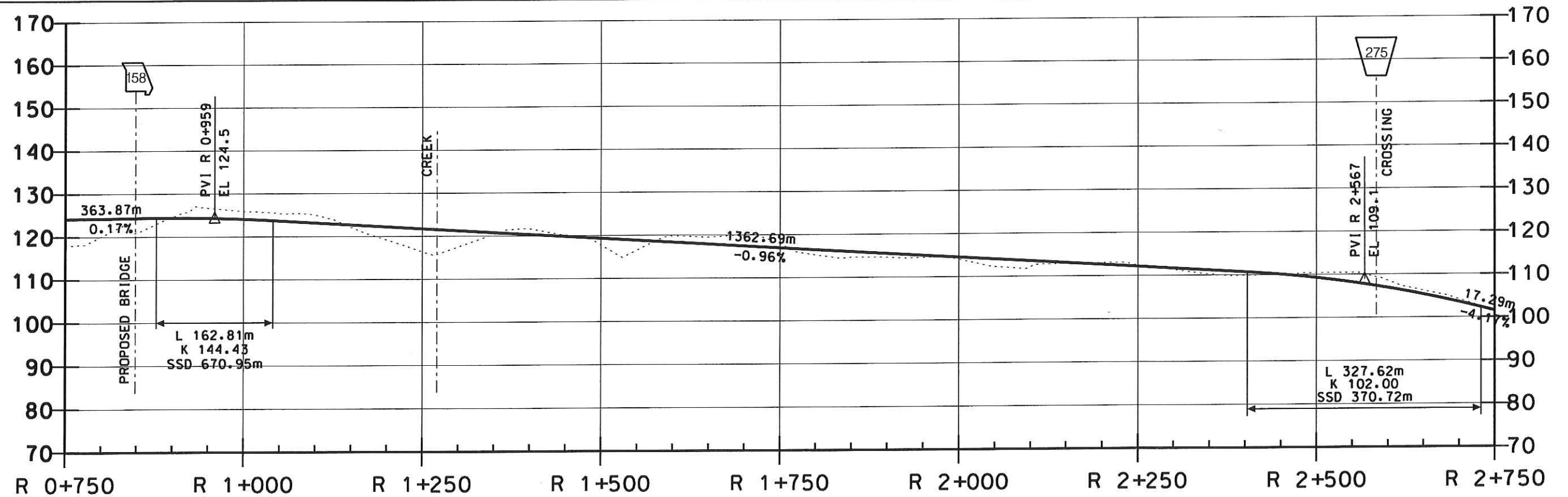
*WCWL*

WAYNE COUNTY WETLAND

*BCWL*

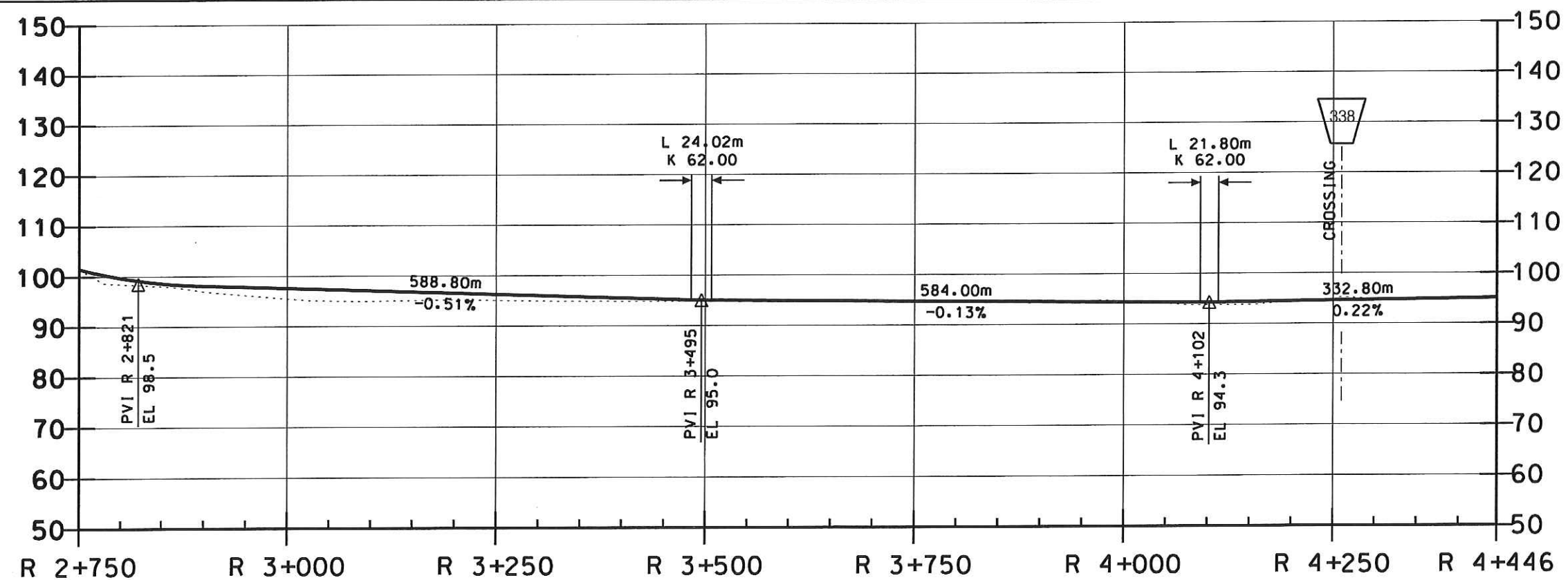
BUTLER COUNTY WETLAND



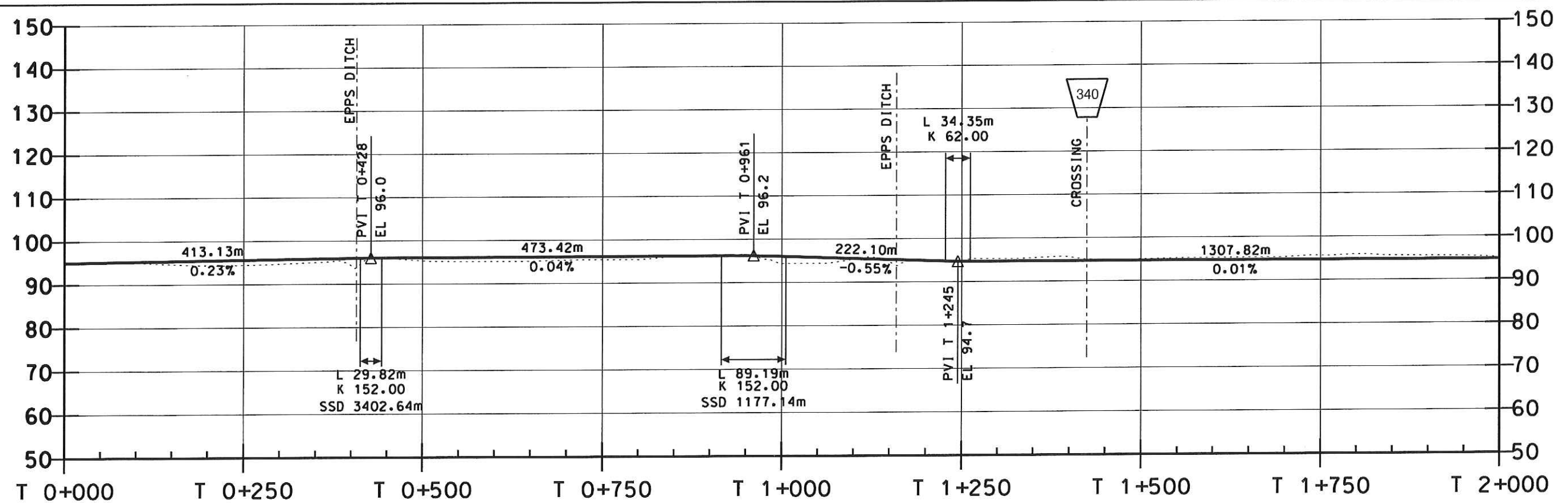


ROUTE 67 LOCATION STUDY - ALTERNATE R

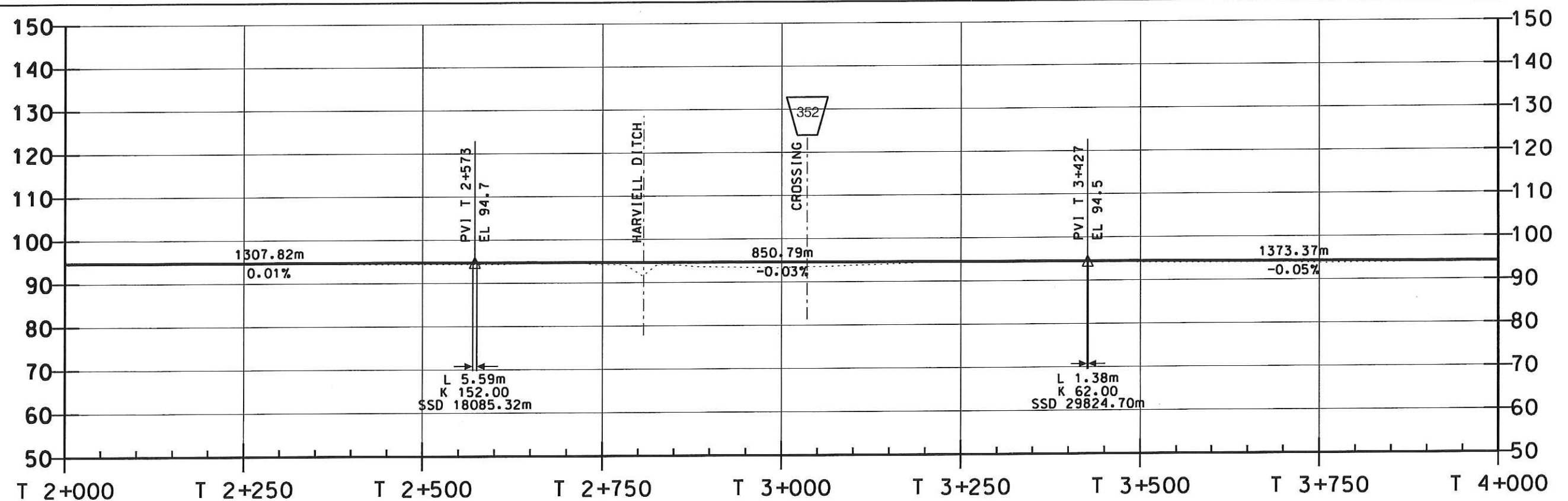
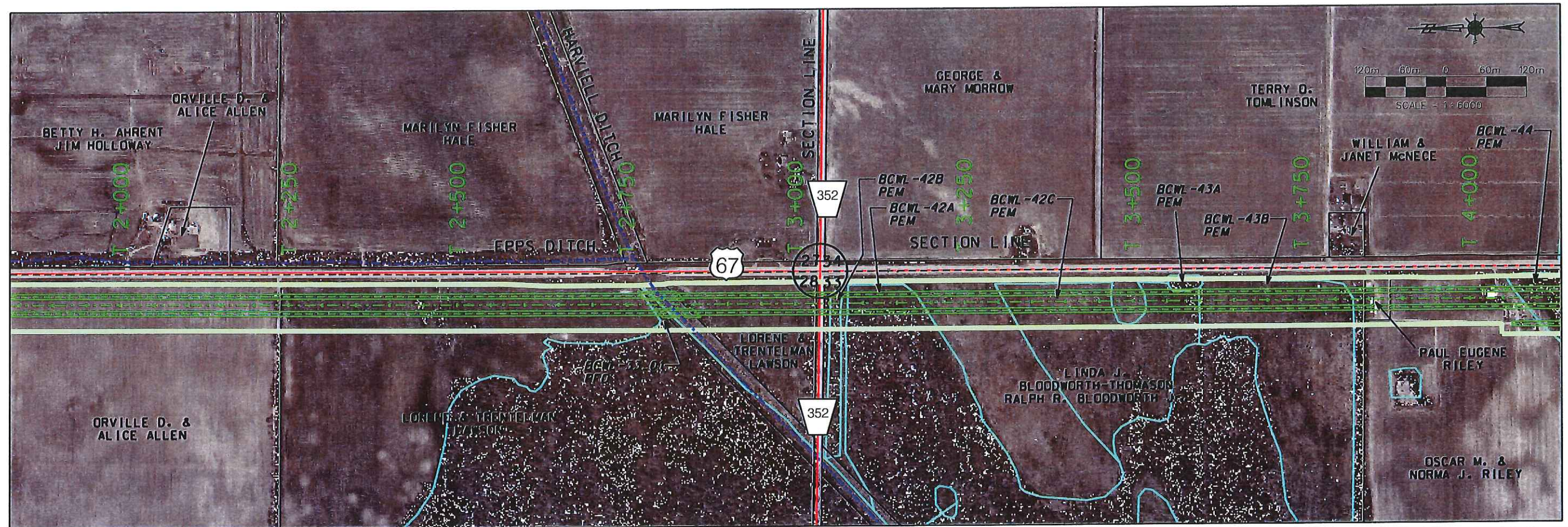




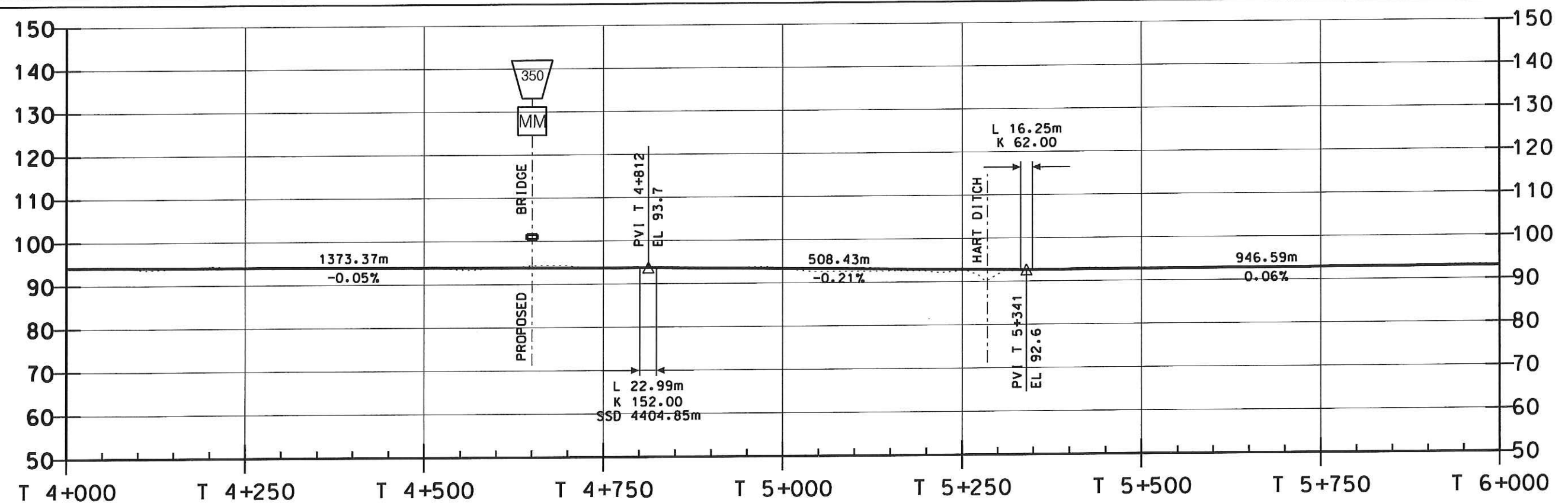




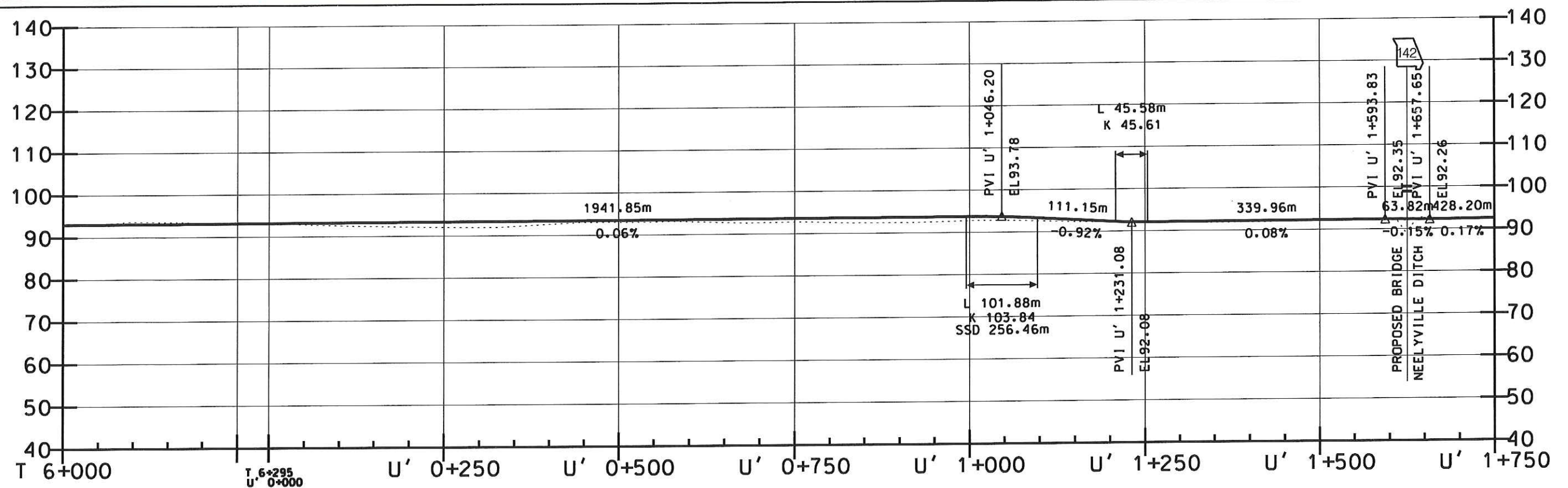
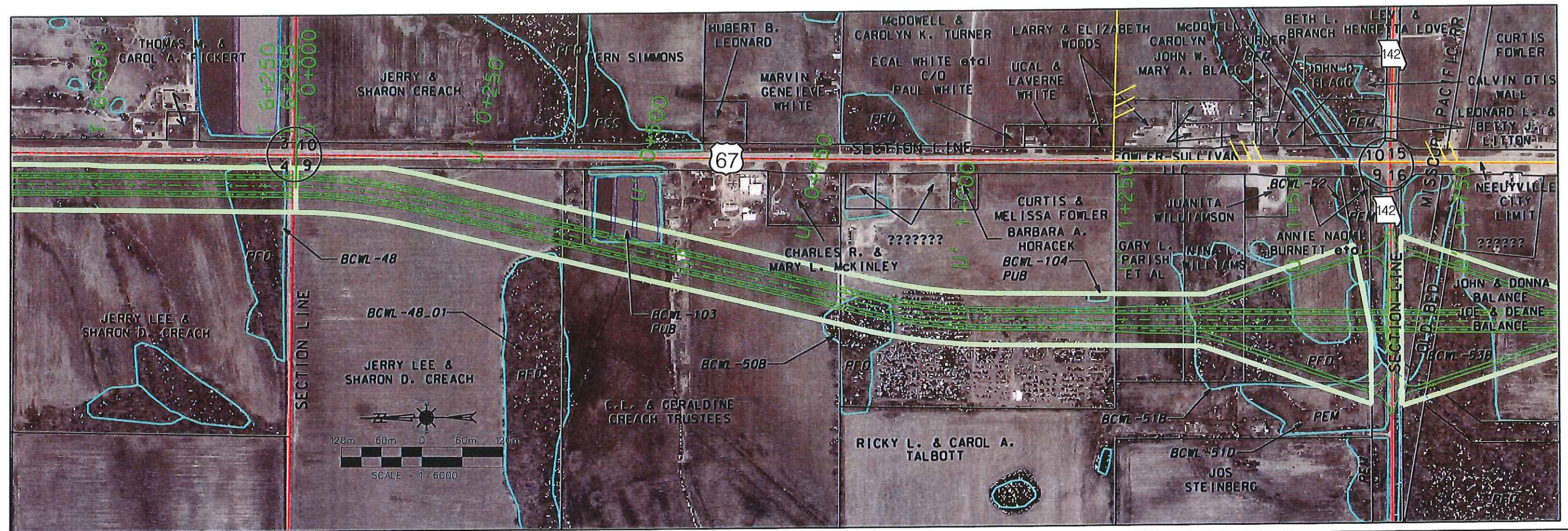




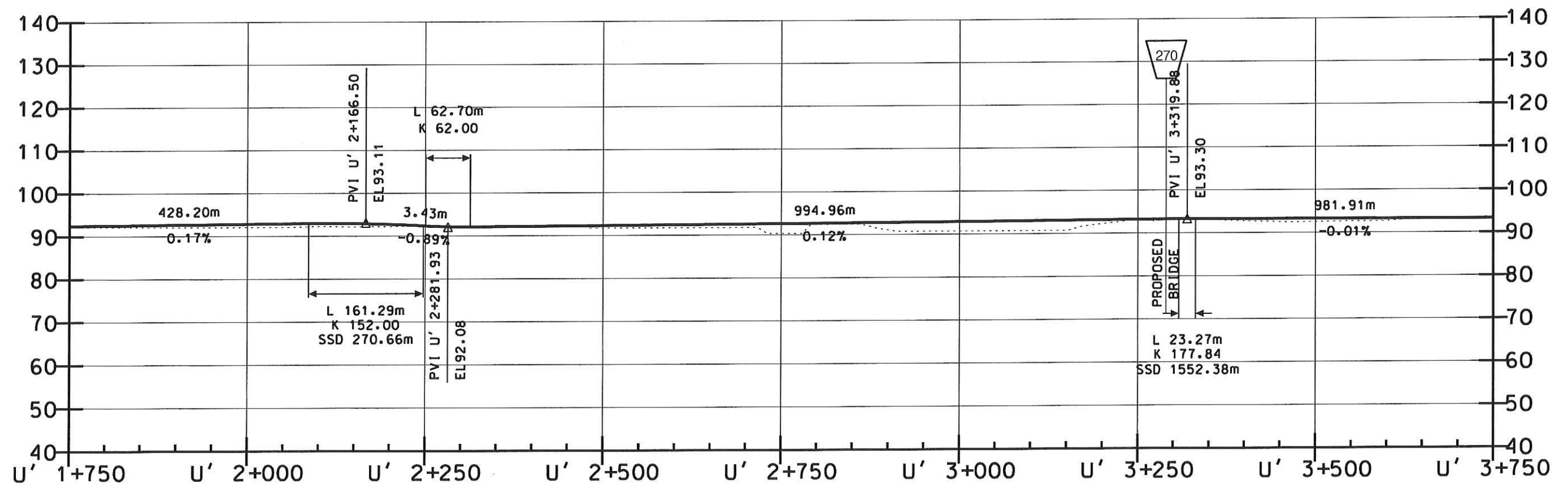
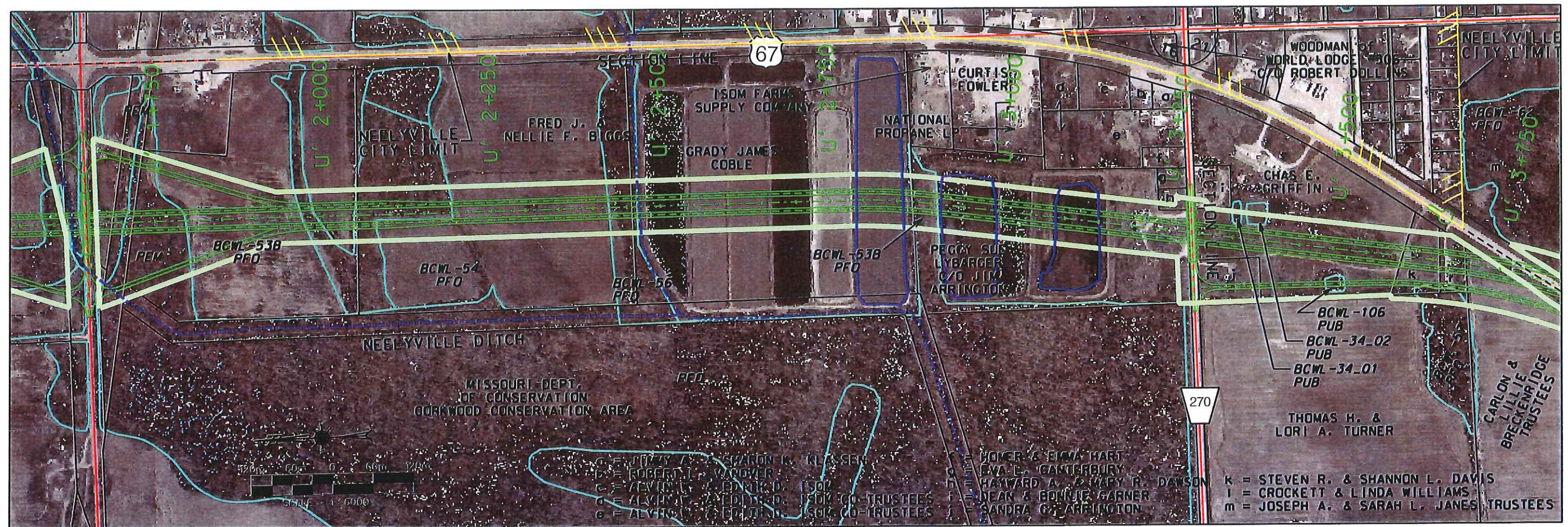






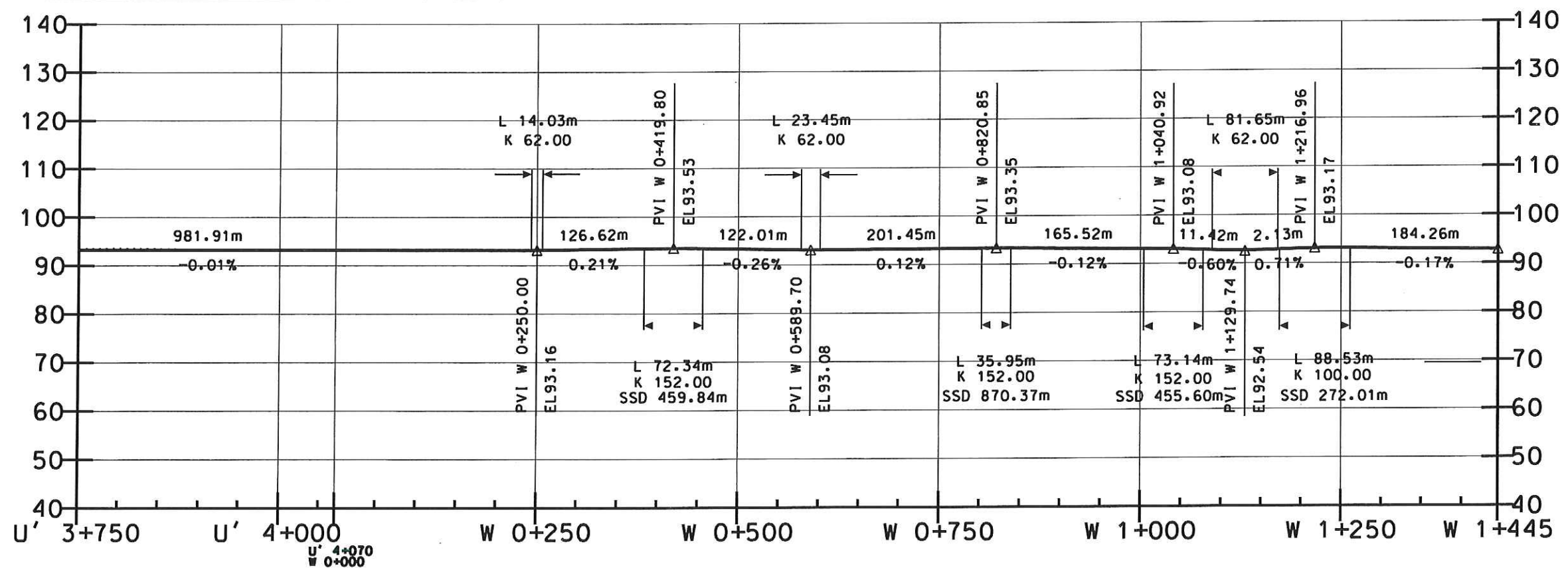
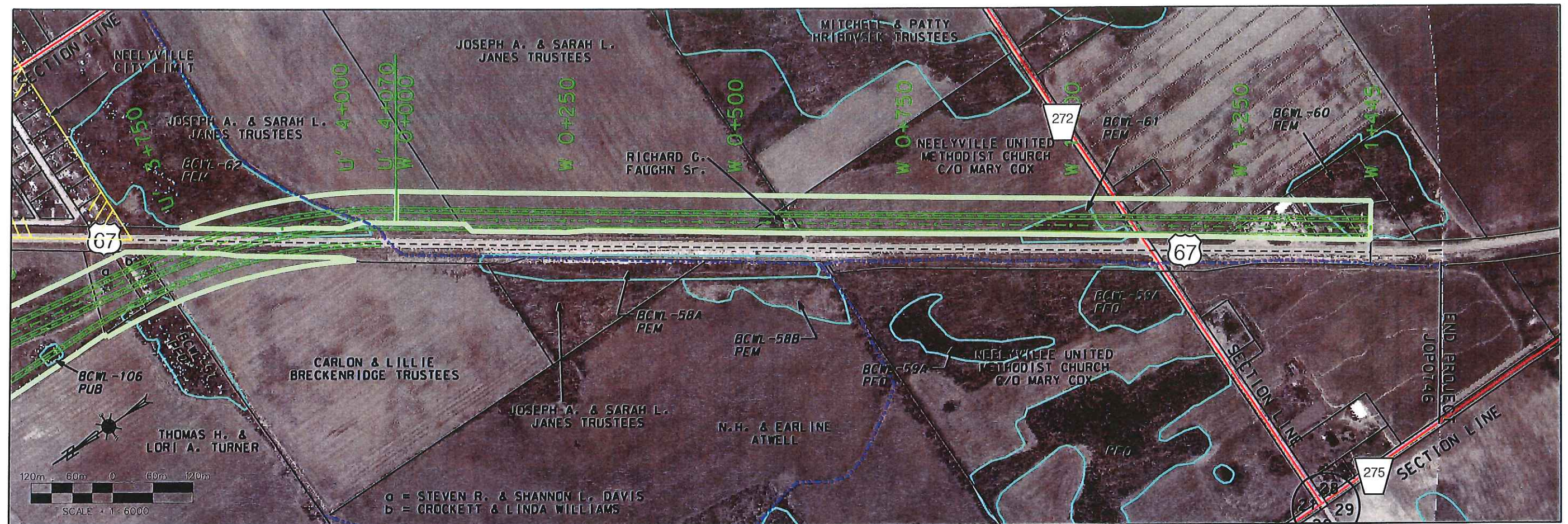






ROUTE 67 LOCATION STUDY - ALTERNATE U'





ROUTE 67 LOCATION STUDY - ALTERNATE W